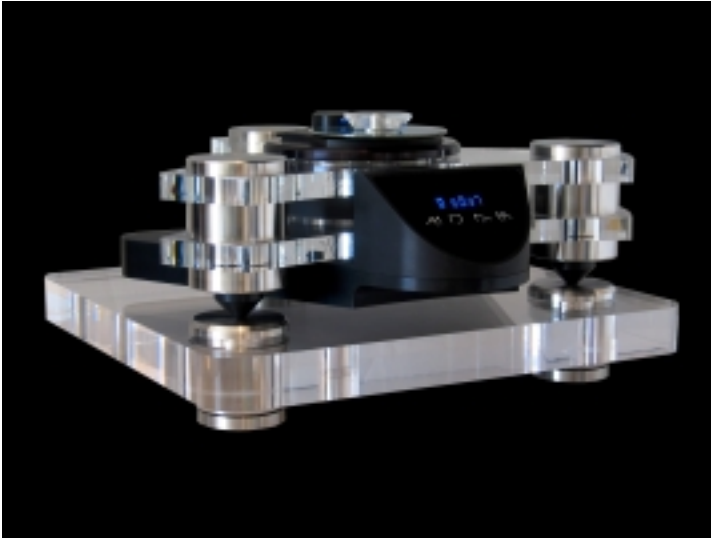


KALISTA CD Transport



After two years of development Metronome Technologie presents the most elaborated transport this company has ever proposed. Made around materials selected for their ability to deliver the best sound, the KALISTA CD transport presents an innovative design and an aesthetic way to extract the best sound from CD media.

GLOBAL OVERVIEW

MAIN IDEA AROUND THE KALISTA DEVELOPMENT

The main objectives were to develop the best sounding, most analog and most eye attractive CD transport with high musicality:

- **Separated power supply** for no mechanical influence of the transformers vibration to the CD mechanism (very sensitive to vibrations) Also better electrical isolation of the digital stage to the AC power supply: less pollution coming from the AC and less pollution from the digital stages to the AC. (the preamp and amp suffer less from the digital radiation vehiculed by AC power supply). Five transformers are used to separate the different stages: display (very noisy part), motor and servo of the CDM12 and digital output stage. The interface with the IEC connector is done by a 5 element AC filter (Shaffner components) The IEC plus permit the use of the best AC cable accessible.
- **Transport module:** made of the best sounding materials like Perspex and stainless steel. These materials have a great influence on the final sound of the KALISTA and the own sound is reproduced by the CD mechanism.
- **At each stage the best passive and active components have been selected:**
- In the power supply: Schottky diodes, high speed regulators.
- All electrolytic capacitors are from Philips, National, and ELNA. These electrolytic capacitors are bypassed with polypropylene capacitors. Special polypropylene capacitors on the analog stage.

International distribution: acoustic-precision@wanadoo.fr

ACOUSTIC PRECISION *Diffusion*

Fax: (33) 561 735 882 Tel: (33) 561 750 664

- High quality PCB with good sounding solders.

**SEPARATED
POWER SUPPLY
WITH
5 TRANSFORMERS
AND
8 REGULATIONS.**

This separated power supply allows removing most of the EMI/RFI pollution coming from the power supply. This permits also to isolate mechanically the sensitive electronics components like crystal oscillator from the vibrations induced by the transformers. Also by the use of totally separated power supply for the different stages (display, servo control, motor, digital output stage) the level of noise and capability of silence reproduction are increased by a wide margin.

The display could also be put OFF by a selector on the power supply front panel: all electrical noise coming from the display is removed and the sound is again one step better.

**POWER SUPPLY
BOX**

It is made of 2mm steel with Delrin feet (3). The feet have two functions: damp the box and permit the insertion of cone. The cones are delivered with the unit and made of the same materials as the feet for a good mechanical conductivity.

The sound of the Metronome products is always validated with the cone in use. We recommend this way to setup the Kalista power supply. The sound is more defined with better inter transient silence (one of the quality of music reproduction is the reproduction of silence: better definition, better acoustic reproduction, better soundstage, sharp image less hifi..).

We recommend also of not installing the KALISTA transport module on top of the power supply module: the use of a different shelve allows upgrading the sound by a wide margin.

**TRANSPORT
MODULE**

Top loaded CD Transport based on the Philips CDM12 PRO drive for the laser, servo and control functions. Proprietary modifications are made to the Philips mechanism to suit the Metronome specifications.

Clamp and shaft, specially designed are used to maintain for the best the CD in place. Both the use of a special stainless steel and a Perpex clamp made of Delrin permit to reproduce the best sound possible with low jitter since the reading is at the pit level.

"Continuous Ground" link from the disc surface to the electrical earth: lower level of CD static charges and better working condition for the reading electronic.

Lightning of the CD surface and thickness for better information extraction: the light come inside of the disk through the transparent Perpex clamp.

**DIGITAL OUTPUT
STAGE**

The digital output stage is 16bit/44.1kHz and up sampled 24bit/96khz (selected by a switch). The digital signal is delivered on the different outputs standards: optical ATT, balanced 110 Ohm AES/EBU and 50 Ohm SPDIF. This digital output board and up sampler possess their own complete power supply from the power supply module (transformer, diodes, regulation).

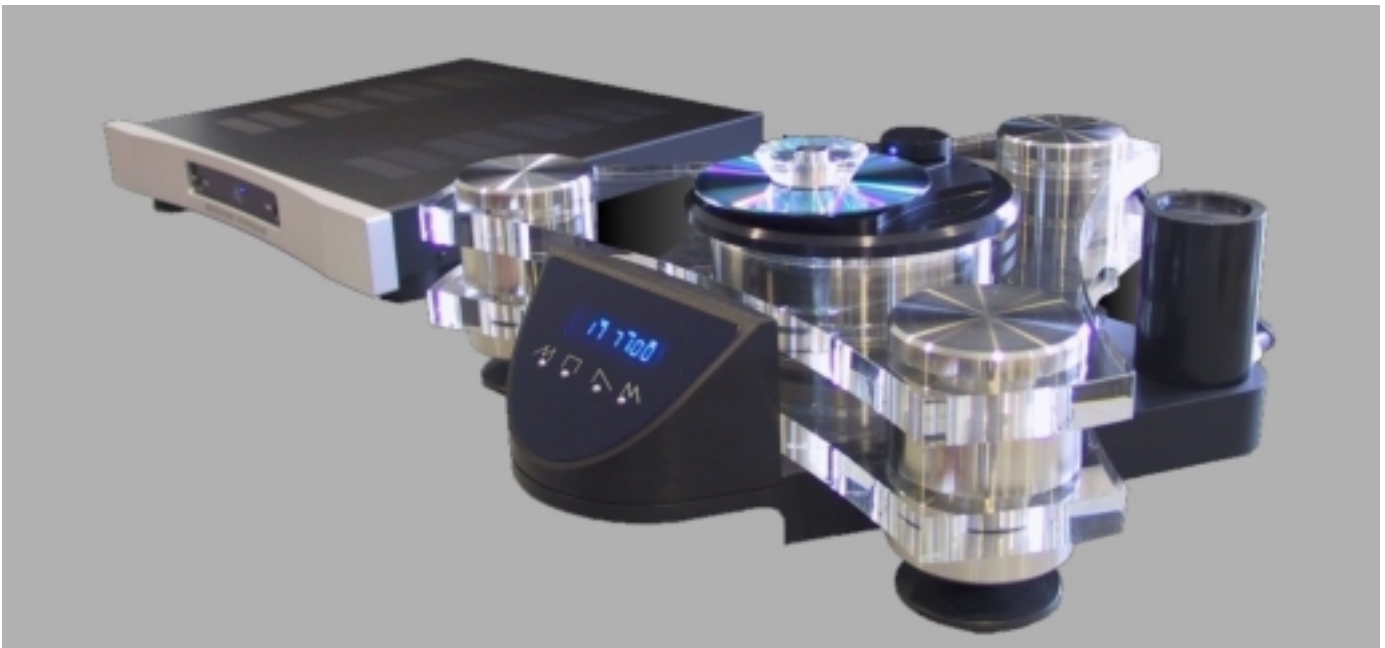
International distribution: acoustic-precision@wanadoo.fr

ACOUSTIC PRECISION *Diffusion*

Fax: (33) 561 735 882 Tel: (33) 561 750 664

TECHNICAL SPECIFICATIONS

Pickup Mechanism:	Professional drive with custom modifications
Power supply	Five transformers and 8 regulations: one for each critical part of the transport.
Standard Digital Outputs:	Switchable Digital up-sampler (44.1 and 96khz) 2 S/PDIF (RCA and BNC) 1 ATT/ST glass fiber optic 1 AES/EBU-XLR
Power consumption	100V A
Dimensions (W x H x D)	450 x 70 x 375 mm for the power supply 450 x 180 x 450 mm for the transport
Weight	59 Kg / 127 lbs (transport and power supply)



International distribution: acoustic-precision@wanadoo.fr

ACOUSTIC PRECISION *Diffusion*

Fax: (33) 561 735 882 Tel: (33) 561 750 664